

Project Description:

El Porvenir requested funding from the Ann Campana Judge Foundation in order to build double pit latrines in the Terrabona region. Specifically, the funds were used to build latrines in Barrio Nueva Esperanza, a peri-urban community in Terrabona. Funding from the Ann Campana Judge Foundation, the municipal government, and the community resulted in the construction of 12 double pit latrines. These latrines now provide improved sanitation to 74 people. In addition, community members received health education training about proper hygiene habits and project maintenance. Hand-washing is one of the main topics of the health/hygiene education program. Each latrine has a small hand-washing station set up beside the latrine to encourage this practice. Health/hygiene education is an ongoing activity.

The community members were actively engaged in the project work: providing labor, a portion of materials, and transportation of materials while EP provided technical assistance, tools, and other materials for the project construction. Now that the infrastructure is built, the community is responsible for ongoing maintenance and repair of the sanitation systems.

Project Outcomes:

Household latrines greatly improve the standard of living of community members. Improved sanitation leads to:

- Improved health
- Increased school attendance for school children.
- Prevention of opportunistic infections encouraged by poor health
- Fewer missed work days
- Community wide economic improvements
- Usage of new latrines instead of open defecation
- Improved community capacity/self-efficacy
- Fewer diseases related to the fecal-oral route of disease

Obstacles Encountered:

The project proceeded quickly and did not encounter obstacles.

One woman from the community said:

“With the latrine project, we have gotten rid of many illnesses in our community. To have a latrine and good hygiene is to have health for all of the families. Today all the families of the community live better than before because we have latrines and hygiene.”



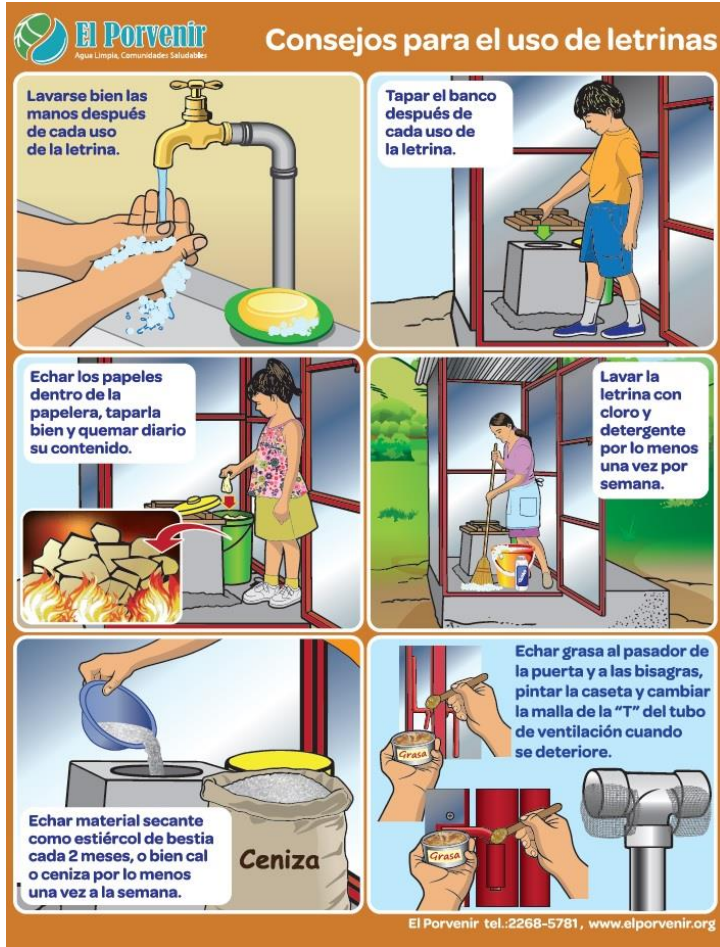


The sticker with the orange border on the latrine door is part of the health/hygiene education program as well as has contact information for El Porvenir so that anyone knows how to reach staff with questions. See the next page for a closer look at the sticker.



Beneficiaries are encouraged to decorate their latrines so that they enjoy using them.

You can see trash cans in the latrines and that all have a cover on the seat. This reduces odors and keeps flies out.



The #1 reminder is about hand washing after using the latrine. The sticker also reminds users to cover the seat, put trash in the trash can, clean the latrine weekly, add a drying substance like ash to the waste, and grease the hinges of the latrine enclosure as well as change the mesh on the ventilation pipe.

We recently re-did the latrine use guidelines going from a list of 12 things to a photo heavy design of the main guidelines to remember. This re-design was based on feedback from community members as to the most effective way to encourage these healthy behaviors.

Financials:

Description	Total (\$)	Cost Structure	ACJF	Municipal Gov't	Community	Total Spent
Regional office expenses	200	3%	200	0	0	200
Administration and accounting	543	9%	543	0	0	545
Indirect Expenses	743	12%	743	0	0	745
Travel to the communities	260	4%	260		0	275
Project staff (2)	350	6%	350		0	350
Hygiene workshops	300	5%	300		0	300
Construction materials	4,320	69%	3,326	648	346	3,315
Project labor	286	5%	0		286	0
Direct Expenses	5,516	88%	4,236	648	631	4,240
Total	6,259	100%	4,979	648	631	4,985